

**University of North Texas**  
**College of Merchandising, Hospitality and Tourism**  
**HMGTT 2810: Introduction to International Sustainable Tourism (Fall 2023)**

Class Schedule: Wednesday 5:30 PM - 8:20 PM (Location: Chilton Hall 387)

Instructor: Dr. Birendra KC; Office: 343E, Chilton Hall

Email: [birendra.kc@unt.edu](mailto:birendra.kc@unt.edu)

Office Hours: 3 PM – 5 PM (Tuesdays and Wednesdays) or by appointment

Student Assistant: Opemipo Alaba Ijose (Email: [OpemipoIjose@my.unt.edu](mailto:OpemipoIjose@my.unt.edu))

**Course Description**

According to the World Tourism Organization, sustainable tourism is tourism that leads to the management of all resources in such a way that economic, social and aesthetic needs can be fulfilled while maintaining cultural integrity, essential ecological processes, biological diversity and life support systems. The new sustainability paradigm gives compelling reasons for governments and the conventional tourism activity to seriously pursue the implementation of sustainable policies and practices.

The course explores the key sustainability-related themes in tourism and challenges for implementation of the operators and suppliers of tourism. Students will also gain the understanding of the economic, environmental and social aspects of tourism and why sustainability is a necessity.

**HTM Mission:**

We educate the next generation of hospitality and tourism leaders who strive for excellence and embrace our diversity in a caring, innovative, and empowering community.

**HTM Vision:**

To be world class in advancing innovative education, creating collaborative knowledge, and transforming future hospitality and tourism leaders.

**Program Learning Outcomes (PLO):**

1. Students will develop appropriate strategies for reaching their career goals in the global hospitality and tourism fields.
2. Students will develop analytical and quantitative skills enhanced by information technology to support smart business decisions in the Hospitality and Tourism Industry.
3. Students will integrate hospitality and tourism business principles and current trends to lead in diverse, collaborative, and global environments.
4. Students will apply innovative and imaginative methods to Hospitality and Tourism businesses utilizing ethical and sustainable practices.
5. Students will demonstrate effective and efficient communication skills in all settings.

## Course Objectives

- Understand the sustainable tourism development core issues: the economic tourism impacts, social and cultural tourism impacts, and environmental impacts (PLO 1, PLO 3, PLO 5)
- Understand issues in policy and planning for sustainable tourism (PLO 1, PLO 3, PLO 5)
- Understand the major components of the sustainable tourism industry (Triple bottom line) (PLO 1, PLO 3, PLO 5)
- Identify tourism stakeholders as base and support for sustainable tourism development (PLO 3, PLO 5)
- Understand the role of key international organizations and stakeholders as support of sustainable tourism development (PLO 3, PLO 5)

## Course Materials (Recommended but not required):

Swarbrooke, J. (1999). *Sustainable Tourism Management*. CABI Publishing: Oxon.

Liburd, J. J., & Edwards, D. (2010). *Understanding the Sustainable Development of Tourism*.

Goeldner, C. R., & Ritchie, J. R. B. (2012). *Tourism: Principles, Practices, Philosophies*. John Wiley & Sons (12<sup>th</sup> Edition)

**Note\*: Additional readings and handouts will be provided on Canvas (Make sure to visit Canvas regularly to get updates on the course materials)**

## Classroom Expectations

- Arrive on time to join the class session. If you miss an in-class activity due to an unexcused absence, you will not receive credit for that class.
- Arrive prepared to participate in the discussion session. Do not sleep, read newspapers, books, magazines, or work on other assignments during the class session.
- Refrain from using your cell phone during the class session. Turn the ringer OFF before class begins and do not send text messages. Sending or receiving phone calls, text messages, or other forms of communication via a cell phone or similar device is strictly forbidden. Violations will count against class participation.
- Be respectful of your classmate's opinions and contributions to classroom discussions. Inevitably, others will have different views than you on a certain topic. These dialogues should encourage each of us to think about topics from a new perspective and will contribute to a lively discussion. The classroom is a "safe place" where others will not be judged or ridiculed for their opinions, and where everyone should feel comfortable contributing to the discussion. Students who are disrespectful to their peers or the instructor will be asked to leave the session and will receive an unexcused absence for that class period.
- Honest and ethical conduct is both a required academic and professional behavior. Students who are found cheating, plagiarizing, or demonstrating poor ethical decision making will be subject to the full range of academic penalties presented in the UNT Student Handbook.

## Grading

<i>Syllabus Agreement Form</i>	<i>20 points</i>
<i>Participation and Discussion</i>	<i>80 points</i>
<i>Pop-Quizzes</i>	<i>120 points</i>
<i>Self-Introduction</i>	<i>40 points</i>
<i>Travel Personality Quiz</i>	<i>40 points</i>
<i>Online Discussion Forum</i>	<i>120 points</i>
<i>Midterm Exam</i>	<i>140 points</i>
<i>Final Exam</i>	<i>140 points</i>
<i>Sustainable Tourism Paper (*Includes Presentation)</i>	<i>300 points</i>
<b>Total</b>	<b>1000 Points</b>

## Grading Details:

1. Syllabus Agreement Form: 20 Points
2. Participation and Discussion: 80 Points
3. Pop-Quizzes: 120 Points (10\*12)
4. Self-Introduction: 40 Points (40\*1)
5. Travel Personality Quiz: 40 Points (40\*1)
6. Online Discussion Forum: 120 Points (60\*2)
7. Midterm and Final Exam: 280 Points (140\*2)
8. Sustainable Tourism Paper (Includes Project Presentation): 300 Points
  - Part I: Background of Tourism Destination (40 Points)
  - Part II: Impact of Tourism (150 Points)
  - Part III: Sustainable Management of Tourism Destination (50 Points)
  - Part IV: Project Presentation (40 Points)
  - Part V: Peer Evaluation (20 Points)

## Letter Grades

This following grading scale will be used to determine final grade:

A	90%-100%
B	80%-89.9%
C	70%-79.9%
D	60%-69.9%
F	Below 60%

## **Course Requirements**

### **In-Class Participation and Discussion**

Attendance for the class session is required to take part in effective class participation and discussion. Policies will be revisited to accommodate unforeseen circumstances. You must engage and actively participate in discussions based upon assigned readings and course content. During each class, we will be discussing key issues from selected readings and assignments.

### **Self-Introduction (Share a Picture - Optional)**

For this assignment, you will introduce yourself in 200-250 words, information disclosure is voluntary. However, the purpose of the activity is to understand your traveling experiences (domestic or international). In this process, you will get to know your fellow classmates, which is an avenue for you to connect with each other. You will also require a reply to at least 4 responses from your peers. A guideline for this assignment will be available on Canvas.

### **Travel Personality Quiz and Discussion**

You will take a travel personality quiz. Once you get the results, you post a brief discussion of your travel personality. You will also require a reply to at least 4 responses from your peers. The guideline will be posted on Canvas.

### **Online Discussion Forum**

The online discussion forum will allow each student to assess online video and peer-review journal articles (related to course content). The guideline will be posted on Canvas.

### **Exams**

There will be two exams (Exam 1 and 2), each exam will cover the materials discussed and covered in the class (readings and lecture notes). Details for the exams will be provided during the class.

### **Make-up Examinations**

Make-up exams will **NOT** be scheduled unless arrangements are made prior to the examination. Make-up exams will be arranged only under reasonable circumstances deemed as such by the instructor. All requests should be made as early as possible and sufficient evidence must be presented to support requests (i.e., doctor's note, Emergency Dean Note, other issues, etc.).

### **Pop-Quizzes**

There will be weekly pop quizzes (worth 120 points), which will be based on the content covered in the class. Pop quizzes will be due before the class each week. There will be no make-up opportunities for unexcused absences, and make-up opportunities for excused absences will be provided within a limited timeframe-you need to consult your instructor in advance for such arrangements.

### **Sustainable Tourism Paper**

Students are expected to work on a sustainable tourism paper, look at the assignment details for the components of sustainable tourism paper. The guideline for this assignment will be discussed in the class and uploaded on Canvas for a reference. Details will be further discussed in the class.

**All written assignments (in MS Word Document) MUST follow this format:**

- Typeface: Times New Roman
- Font: 12
- Margins: 1" on each side (and top and bottom)
- Spacing: 1.5
- Headings: Bold and/or underlined
- Ink color: Black

**Revisions**

The instructor reserves the right to revise this syllabus and list of requirements when, in his judgement, such revision will benefit the advancement of the course goals and objectives.

# College of Merchandising, Hospitality & Tourism

## Syllabus Statements

Fall, 2023 (All Sessions)

### Advising and Degree Progression

#### Advising

ALL students are expected to meet with their Academic Advisor each semester to update your degree plan and to stay on track for a timely graduation.

- **Advising Contact Information (Chilton Hall 385 – 940.565.4635)**
- **SCHEDULE APPOINTMENTS HERE:** [appointments.unt.edu](https://appointments.unt.edu)
- **Email:** [cmhtadvising@unt.edu](mailto:cmhtadvising@unt.edu)

#### Prerequisites

- Ultimately, it is a student's responsibility to ensure they have met all prerequisites before enrolling in a class.
- A prerequisite is a course or other preparation that must be successfully completed (a grade of C or better) before enrollment in another course. All prerequisites are included in catalog course descriptions.
- Students that lack prerequisites for a course are not allowed to remain in the course.

#### Transfer Courses

Any transfer course(s) from another institution must receive *prior approval* from your CMHT Academic Advisor to ensure that the course(s) will be applicable to your degree plan at UNT.

#### Dropped for Non-payment

- Students will be dropped for nonpayment for enrolled courses, parking fees, schedule change fees, etc. Please check your account daily through the 12<sup>th</sup> class day to ensure you have not been dropped for non-payment of any amount. It is the student's responsibility to make all payments on time.
- ***Students cannot be reinstated for any reason after the 12<sup>th</sup> class day regardless of situation.***

#### Dropping a Course

- **A decision to drop a course may affect your current and future financial aid eligibility.** Talk to your academic advisor or Student Financial Aid if you are thinking about dropping a course.

- Speak with the course instructor to discuss any possible options to be successful in the course before dropping.
- Meeting deadlines for dropping a course are the student's responsibility.
- **There are different procedures for dropping a class depending on the time of semester.**  
Please see the instructions for dropping a class here:  
<https://registrar.unt.edu/regISTRATION/dropping-class>

### **Financial Aid Requirements**

- A student must maintain Satisfactory Academic Progress (SAP) to continue receiving financial aid by maintaining a minimum 2.0 cumulative GPA and successfully completing the required number of credit hours based on total registered hours per semester. Students cannot exceed attempted credit hours above 150% of their required degree plan. If a student does not maintain the required standards, the student may lose financial aid eligibility. Visit <https://financialaid.unt.edu/sap> for more information about financial aid Satisfactory Academic Progress.

### **What if You Are In Distress?**

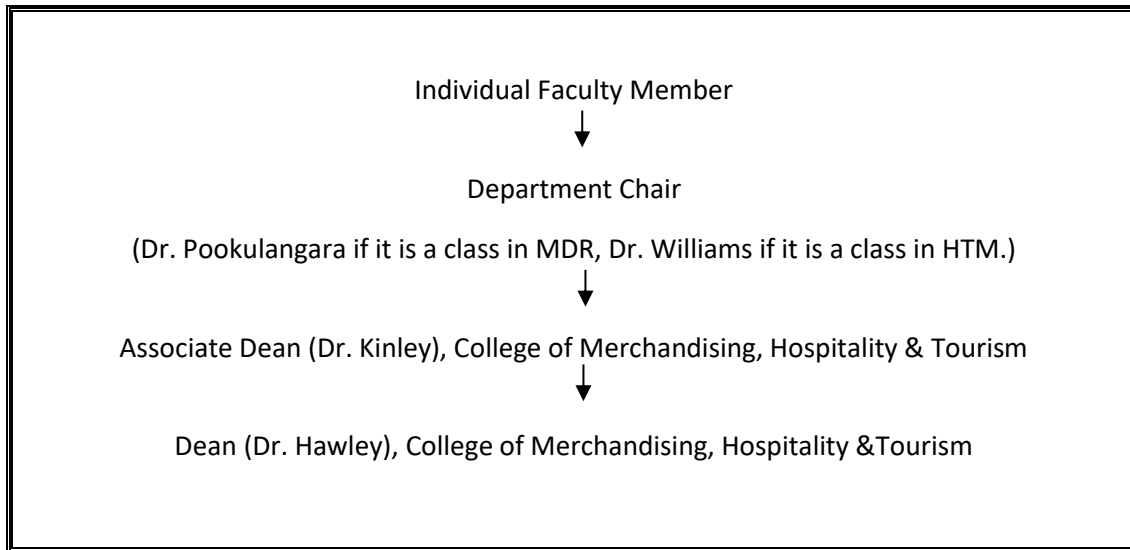
The University has a number of resources that can be useful if you find yourself in need of help. Faculty and advisors can help direct you to resources; please note that any reports of sexual harassment, sexual assault, dating violence, or stalking must be reported to the UNT Dean of Students, per Texas law. Some resources you might consult are:

UNT Police	940-565-3000
Dean of Students	940-565-2648 or 940-565-2039
Counseling and Testing	940-565-2741
Student Health and Wellness Center	940-565-2333
Office of Disability Access	940-565-2333
Housing and Residence Life	940-565-2610
Substance Use and Resource Education Center	940-565-3177
Veterans Center	940-369-8021
Denton County Friends of the Family	940-387-5131
National Suicide Hotline	1-800-273-TALK

## **Grade and Class Concerns**

### **Do you know who to contact for a course-related issue?**

Understanding the academic organizational structure is important when resolving class-related or advising issues. When you need problems resolved, please follow the steps outlined below:



### **Do you require special accommodations?**

The University of North Texas and the College of Merchandising, Hospitality and Tourism make reasonable academic accommodation for students with disabilities. Students seeking accommodation must first register with the Office of Disability Accommodation (ODA) to verify their eligibility. If a disability is verified, the ODA will provide you with an accommodation letter to be delivered to faculty to begin a private discussion regarding your specific needs in a course. ODA notices of accommodation should be provided as early as possible in the semester to avoid any delay in implementation. Note that students must obtain a new letter of accommodation for every semester and must meet with each faculty member prior to implementation in each class. Students are strongly encouraged to deliver letters of accommodation during faculty office hours or by appointment. Faculty members have the authority to ask students to discuss such letters during their designated office hours to protect the privacy of the student. For additional information see the Office of Disability Accommodation website at <https://studentaffairs.unt.edu/office-disability-access>. You may also contact them by phone at 940.565.4323.

### **Are you aware of safety regulations?**

Students are urged to use proper safety procedures and guidelines. In lab sessions, students are expected and required to identify and use property safety guidelines in all activities requiring lifting, climbing, walking on slippery surfaces, using equipment and tools, handling chemical solutions and hot and cold products. Students should be aware that the University of North Texas is not liable for injuries incurred while students are participating in class activities. All students are encouraged to secure adequate insurance coverage in the event of accidental injury. Students who do not have insurance coverage should consider obtaining Student Health Insurance for this insurance program. Brochures for this insurance are available in the UNT Health and Wellness Center on campus. Students who are injured during class activities may seek medical attention at the UNT Health and Wellness Center at rates that are reduced compared to other medical facilities. If you have an insurance plan other than Student



Health Insurance at UNT, please be sure that your plan covers treatment at this facility. If you choose not to go to the UNT Health and Wellness Center, you may be transported to an emergency room at a local hospital. You are responsible for expenses incurred there.

### **Do you know the Academic Integrity Policy?**

Academic Integrity Standards and Consequences, UNT Policy 06.003.

Academic dishonesty occurs when students engage in behaviors including, but not limited to cheating, fabrication, facilitating academic dishonesty, forgery, plagiarism, and sabotage. A finding of academic dishonesty may result in a range of academic penalties or sanctions ranging from admonition to expulsion from the University.

Academic dishonesty includes, but is not limited to, the use of any unauthorized assistance in taking quizzes, tests, or exams; dependence upon the aid of sources beyond those authorized by the instructor, the acquisition of tests or other material belonging to a faculty member, dual submission of a paper or project, resubmission of a paper or project to a different class without express permission from the instructors, or any other act designed to give a student an unfair advantage. Plagiarism includes the paraphrase or direct quotation of published or unpublished works *without* full and clear acknowledgment of the author/source. Academic dishonesty will bring about disciplinary action, which may include expulsion from the university. This is explained in the UNT Student Handbook. Your teacher should have a syllabus policy describing penalties for academic dishonesty.

Your instructor may decide to record lectures and/or class content for students enrolled in this class section to refer to throughout the semester. **Class recordings are the intellectual property of the university or instructor and are reserved for use only by students in this class and only for educational purposes. Students may not post or otherwise share the recordings outside the class, or outside the Canvas Learning Management System, in any form. Failing to follow this restriction is a violation of the UNT Code of Student Conduct and could lead to disciplinary action.**

### **Do you meet ALL expectations for being enrolled in a course?**

- CMHT students are expected to meet all prerequisites for the courses in which they are registered.
- Student are expected to be respectful of other students, guests, and faculty. Behavior that interferes with an instructor's ability to conduct a class or other students' opportunity to learn is unacceptable and disruptive and will not be tolerated in any instructional forum at UNT.
- Students engaging in unacceptable behavior will be directed to leave the classroom and may be referred to the Dean of Students for possible violation of the Code of Student Conduct.
- UNTs expectations for student conduct apply to all instructional forums, including university and electronic classroom, labs, discussion groups, field trips, etc. The Code of Student Conduct can be found at <https://studentaffairs.unt.edu/dean-of-students>.

The College of Merchandising, Hospitality and Tourism requires that students respect and maintain all university property. Students are accountable through disciplinary action for any intentional damages

they cause in classrooms. (e.g., writing on tables). Disruptive behavior is not tolerated (e.g., arriving late, leaving early, sleeping, talking on the phone, texting or game playing, making inappropriate comments, ringing cellular phones/beepers, dressing inappropriately).

## **Career Resources**

### **CMHT Career Coach**

For one-on-one help with your resume, cover letter, LinkedIn profile, interview tips/practice or other internship and job-search skills, Mrs. Dee Wilson ([Dee.Wilson@unt.edu](mailto:Dee.Wilson@unt.edu)) is our Career Center Coach. Contact her for an appointment through [navigate.unt.edu](http://navigate.unt.edu) or drop by her office in Chilton 333.

### **Career Center**

The Career Center is currently located in Sage Hall. They provide \*free\* business cards, professional portraits, etc. They also host several recruiters throughout the year in various events/information sessions and career fairs. Learn more about their services here: <https://careercenter.unt.edu/>.

### **Online Job Board and Social Media Sites**

- <https://cmht.unt.edu/jobs>
- Facebook CMHT Careers Group - <https://www.facebook.com/groups/CMHTCareers/>
- LinkedIn - <https://www.linkedin.com/in/unt-cmht-2023b8173/>
- Twitter - @UNTCMHT
- Facebook Social Sites - @UNTCMHT and @UNTHTM
- Instagram - [@untcmht](https://www.instagram.com/untcmht)

### **CMHT Career Expo**

The next CMHT Career Expo will be Wednesday, September 13, 2023. You can find all information here: <https://cmht.unt.edu/merchandising-and-digital-retailing/career-expo>. If you need to borrow professional clothing to wear, please go to the UNT Career Center's Suit Up Closet in Crumley Hall, 1<sup>st</sup> Floor. Hours open are posted at <https://careercenter.unt.edu/resources/unt-suit-up-closet/>. For any questions, please contact the Diamond Eagle Student Resource Center at [DESresources@unt.edu](mailto:DESresources@unt.edu).

## CMHT-IT Resources

### CMHT-IT Services Student Laptop Checkout Information

The CMHT-IT Services desk located on the 3<sup>rd</sup> floor of Chilton Hall outside room **386** will have Dell laptops available for checkout for all CMHT students. These laptops and the CMHT-IT Services desk will be available during the following hours:

Monday: 7:30AM – 9:00PM

Tuesday: 7:30AM – 9:00PM

Wednesday: 7:30AM – 9:00PM

Thursday: 7:30AM – 9:00PM

Friday: 7:30AM – 5:00PM

These Dell laptops can be checked out at any point during the above hours and must be returned on the same business day to the CMHT-IT Services personnel. These laptops must remain on campus and will **not** save your data. So be sure to use a USB or email yourself to save your work!

For more information, please stop by the CMHT-IT Services desk in Chilton Hall 386 or give us a call at (940) 565-4227.

### UNT Citrix Virtual Lab

UNT Students currently enrolled in a CMHT course have access to the UNT Citrix Virtual Lab. This is useful if your course requires specific software and you need access to the software on your personal machine. You can find more information and installation steps here:

<https://academictechnologies.unt.edu/services/computer-labs/request/remotely-connect-virtual-computer-lab#connect-options>.

The CMHT-IT Services desk can assist you with installing the Citrix Workspace client on your personal machine. Please see above hours of operation for our IT services desk.

Part of working in the online environment involves dealing with the inconveniences and frustration that can arise when technology breaks down or does not perform as expected. Here

at UNT we have a Student Help Desk that you can contact for help with Canvas or other technology issues.

**IT Help Desk:** UNT Helpdesk (<https://aits.unt.edu/support>)

**Email:** [helpdesk@unt.edu](mailto:helpdesk@unt.edu)

**Phone:** 940-565-2324

**In Person:** Sage Hall, Room 330

**Walk-In Availability:** 8am-5pm

**Telephone Availability:**

- Monday-Thursday: 8am-9pm
- Friday: 8am-5pm
- Saturday-Sunday: 11am-3pm

**UNT Libraries Laptop Checkout:** <https://library.unt.edu/services/laptop-checkout/>

For additional support, visit [Canvas Technical Help](https://community.canvaslms.com/docs/DOC-10554-4212710328)  
(<https://community.canvaslms.com/docs/DOC-10554-4212710328>)

## **Additional Information**

### **Are You An F-1 Visa Holder?**

To read detailed Immigration and Customs Enforcement regulations for F-1 students taking online courses, please go to the [Electronic Code of Federal Regulations website](http://www.ecfr.gov/) (<http://www.ecfr.gov/>). The specific portion concerning distance education courses is located at Title 8 CFR 214.2 Paragraph (f)(6)(i)(G).

The paragraph reads:

(G) For F-1 students enrolled in classes for credit or classroom hours, no more than the equivalent of one class or three credits per session, term, semester, trimester, or quarter may be counted toward the full course of study requirement if the class is taken on-line or through distance education and does not require the student's physical attendance for classes, examination or other purposes integral to completion of the class. An on-line or distance education course is a course that is offered principally through the use of television, audio, or computer transmission including open broadcast, closed circuit, cable, microwave, or satellite, audio conferencing, or computer conferencing. If the F-1 student's course of study is in a language study program, no on-line or distance education classes may be considered to count toward a student's full course of study requirement.

## **University of North Texas Compliance**

To comply with immigration regulations, an F-1 visa holder within the United States may need to engage in an on-campus experiential component for this course. This component (which must be approved in advance by the instructor) can include activities such as taking an on-campus exam, participating in an on-campus lecture or lab activity, or other on-campus experience integral to the completion of this course.

If such an on-campus activity is required, it is the student's responsibility to do the following:

- (1) Submit a written request to the instructor for an on-campus experiential component within one week of the start of the course.
- (2) Ensure that the activity on campus takes place and the instructor documents it in writing with a notice sent to the International Student and Scholar Services Office. ISSS has a form available that you may use for this purpose.

Because the decision may have serious immigration consequences, if an F-1 student is unsure about his or her need to participate in an on-campus experiential component for this course, s/he should contact the UNT International Student and Scholar Services Office (telephone 940-565-2195 or email [internationaladvising@unt.edu](mailto:internationaladvising@unt.edu)) to get clarification before the one-week deadline.

## **Inclusivity Statement**

Consistent with the University of North Texas policy on diversity, CMHT views diversity as encompassing the intersecting identities that make us unique individuals, including (but not limited to) ethnic/racial identity, nationality, sexual and LGBTQ identity, gender identity and expression, age, religious/spiritual beliefs, socioeconomic status, body shape/size, physical ability status and varying points of view. As members of the UNT community, we have all made a commitment to be part of an institution that respects and values the identities of the students and employees with whom we interact. CMHT does not tolerate identity-based discrimination, harassment, and retaliation. Every student in this class should have the right to learn and engage within an environment of respect and courtesy from others. We encourage you to review UNT's student code of conduct so that we can all start with the same baseline civility understanding ([Code of Student Conduct](#)).

## **Feedback and Communications**

### **Image Release**

The College actively posts images and descriptions of class and student accomplishments. If you do not want your image posted on the CMHT website and/or social media sites, (1) you should avoid being in group photographs or in photographs taken by your teachers or the IT staff and (2) send an email to [TKinley@unt.edu](mailto:TKinley@unt.edu) and request that your name and image not be shared. Dr. Kinley will share this information with the IT staff and the faculty who post to social media. Faculty and staff are asked to honor your wishes without question.

If your instructor employs lecture capture technology to record class sessions, students may occasionally appear on video. The recording may be used in future course offerings.

### **What is SPOT?**

The Student Perceptions of Teaching (SPOT) is a requirement for all organized classes at UNT. This short survey at the end of the semester gives students the opportunity to comment on the course. Student feedback is important and is essential as we strive for excellence.

### **Do you know the date/time of the final exam in this course?**

Final exams or other appropriate end of semester evaluations are administered at the designated times during the final week of each long semester and during the specified day of each summer term. *Please check the calendar early in the semester to avoid any schedule conflicts.* You can find the Final Exam Schedule here: <https://registrar.unt.edu/exams/final-exam-schedule>

### **Do you know what you may be missing?**

Your access point for ALL business and academic services at UNT occurs within the <https://my.unt.edu> site, and EagleConnect is the official method of communication for UNT. If you do not regularly check EagleConnect or forward it to your favorite e-mail account, please do so to learn about job and internship opportunities, CMHT events, scholarships, and other important information. The website that explains EagleConnect and how to forward your email is: <https://it.unt.edu/eagleconnect>.

### **Do you know what to do in an emergency or UNT closure?**

- UNT uses a system called Eagle Alert to quickly notify you with critical information in an event of emergency (i.e., severe weather, campus closing, and health and public safety emergencies like chemical spills, fires, or violence). The system sends voice messages (and text messages upon

permission) to the phones of all active faculty staff, and students. Please make certain to update your phone numbers at <https://my.unt.edu>.

- Some helpful emergency preparedness actions include: 1) ensuring you know the evacuation routes and severe weather shelter areas, determining how you will contact family and friends if phones are temporarily unavailable, and identifying where you will go if you need to evacuate the Denton area suddenly.
- In the event of a university closure, your instructor will communicate with you through Canvas regarding assignments, exams, field trips, and other items that may be impacted by the closure.

## **Sexual Assault Prevention**

UNT is committed to providing a safe learning environment free of all forms of sexual misconduct, including sexual harassment sexual assault, domestic violence, dating violence, and stalking. Federal laws (Title IX and the Violence Against Women Act) and UNT policies prohibit discrimination on the basis of sex, and therefore prohibit sexual misconduct. If you or someone you know is experiencing sexual harassment, relationship violence, stalking, and/or sexual assault, there are campus resources available to provide support and assistance. UNT's Survivor Advocates can assist a student who has been impacted by violence by filing protective orders, completing crime victim's compensation applications, contacting professors for absences related to an assault, working with housing to facilitate a room change where appropriate, and connecting students to other resources available both on and off campus. The Survivor Advocates can be reached at [SurvivorAdvocate@unt.edu](mailto:SurvivorAdvocate@unt.edu) or by calling the Dean of Students Office at 940-565- 2648. Additionally, alleged sexual misconduct can be non-confidentially reported to the Title IX Coordinator at [oeo@unt.edu](mailto:oeo@unt.edu) or at (940) 565 2759.

## **Prohibition of Discrimination, Harassment, and Retaliation (Policy 16.004)**

The University of North Texas (UNT) prohibits discrimination and harassment because of race, color, national origin, religion, sex, sexual orientation, gender identity, gender expression, age, disability, genetic information, veteran status, or any other characteristic protected under applicable federal or state law in its application and admission processes; educational programs and activities; employment policies, procedures, and processes; and university facilities. The University takes active measures to prevent such conduct and investigates and takes remedial action when appropriate.

## **Retention of Student Records**

Student records pertaining to this course are maintained in a secure location by the instructor of record. All records such as exams, answer sheets (with keys), and written papers submitted during the duration of the course are kept for at least one calendar year after course completion. Course work completed via the Canvas online system, including grading information and comments, is also stored in a safe electronic environment for one year. Students have the right to view their individual record; however, information about student's records will not be divulged to other individuals without proper written consent. Students are encouraged to review the Public Information Policy and the Family Educational Rights and Privacy Act (FERPA) laws and the University's policy. See UNT Policy 10.10, Records Management and Retention for additional information.

**Tentative Class Schedule\*(Subject to change as needed)**

Week	Dates	Topics	Remarks
Week 1	8/23	Syllabus overview & course expectations	First Day of Class! Quiz 1 Self-introduction due 8/23
Week 2	8/30	Introduction to tourism	Quiz 2 Syllabus agreement form due 8/30
Week 3	9/6	Socio-cultural aspects of tourism	Quiz 3 Travel personality quiz due 9/6
Week 4	9/13	Career Expo	No Class!
Week 5	9/20	Economic aspects of tourism	Quiz 4 Project Part I due 9/20
Week 6	9/27	Gringo Trails by Pegi Vail (Video)	Quiz 5 Online Discussion Forum due 9/27
Week 7	10/4	Environmental aspects of tourism	Quiz 6
Week 8	10/11	Tourism and sustainability Midterm Exam Review	Quiz 7
Week 9	10/18	Midterm Exam	During Regular Class Hours
Week 10	10/25	Planning for sustainable tourism	Quiz 8 Project Part II due 10/25
Week 11	11/1	Assigned Journal Article	Quiz 9 Online Discussion Forum due 11/1
Week 12	11/8	Tourism development models	Quiz 10 Project Part III due 11/8
Week 13	11/15	Miscellaneous topics (CSR and TBL)	Quiz 11
11/22: Thanksgiving Week			
Week 14	11/29	Miscellaneous Topics (Ecotourism and Voluntourism) Final Exam Review	Quiz 12
Week 15	12/6	Project Presentation	Project Part IV: Project Presentation
Week 16	12/13	Final Exam	During Regular Class Hours



**HMG T 2810: Introduction to International Sustainable Tourism**  
**Fall 2023 Syllabus Agreement Form**

**Worth 20 points**

Carefully read the class syllabus and submit this syllabus agreement form (Printed Full Name with electronic signature or without signature will suffice the requirement). This form is uploaded on Canvas. Before signing the agreement, dedicate some time to read the syllabus in detail. If you have any questions, ask them in class or email them.

My signature below indicates that I have read and understand all the policies of this class. I am aware of the due dates for all assignments as well as the dates and times for the exams and the sustainable tourism paper. I hereby agree to abide by all policies as outlined in this syllabus and understand the penalties for non-compliance.

Signature: \_\_\_\_\_

Name (print): \_\_\_\_\_

Date: \_\_\_\_\_